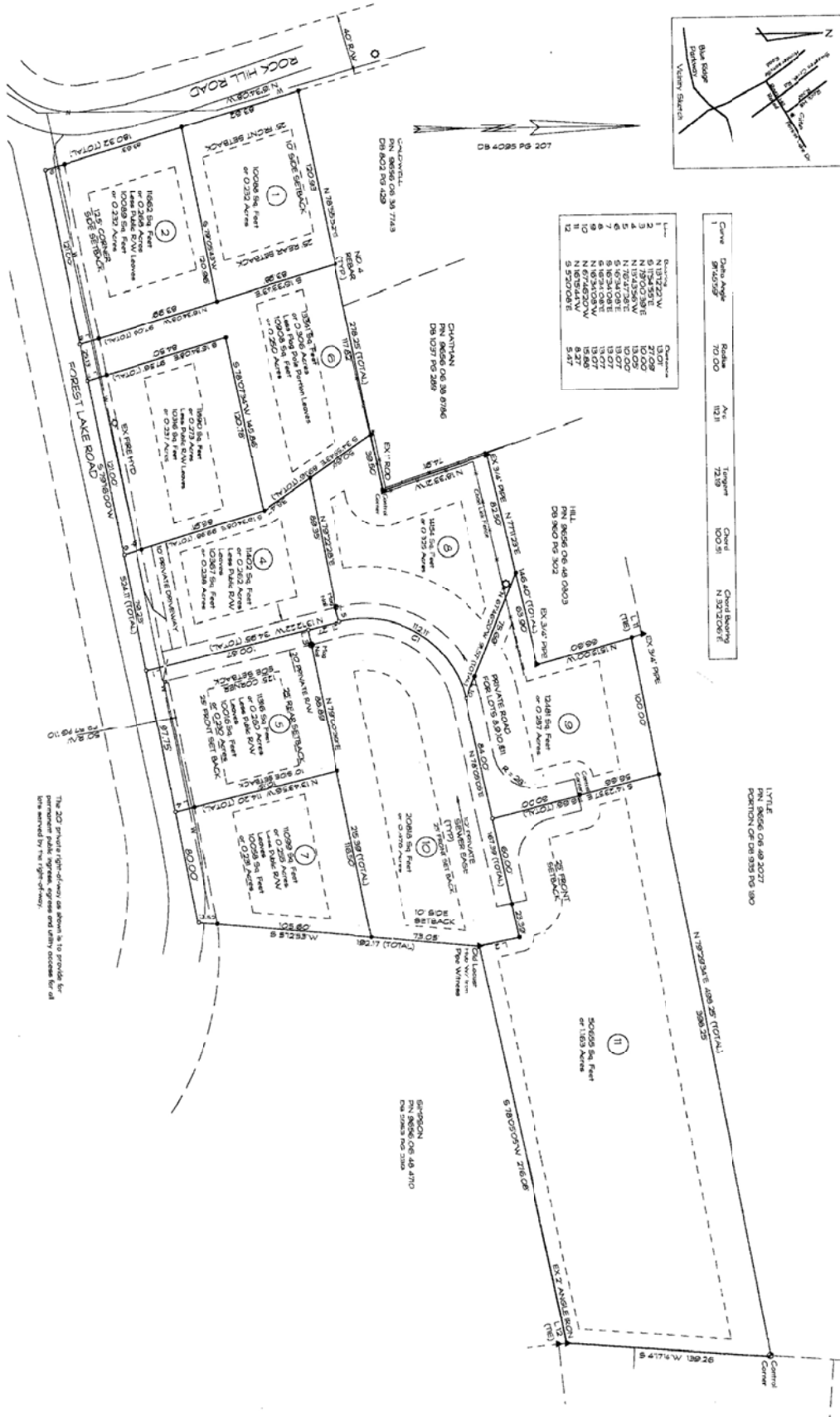


Curve	Data Angle	Radius	Arc	Length	Chord	Chord Bearing
1	97.4205°	70.00	12.11	12.19	100.21	N 121.210° E

Line	Bearing	Distance
1	N 137°22' W	13.07
2	N 170°03'38" E	10.00
3	N 134°35' W	13.05
4	N 134°35' W	13.05
5	S 69°34'08" E	13.07
6	S 69°34'08" E	13.07
7	S 69°34'08" E	13.07
8	N 62°34'08" W	13.07
9	N 62°34'08" W	13.07
10	N 62°34'08" W	13.07
11	N 62°34'08" W	13.07
12	S 57°00'00" E	5.47



LINE 8
 PN 18656 06 38 2007
 PORTION OF DB 935 PG 380

The 2C Private Right-of-Way as shown is to provide for permanent public ingress, egress and utility access for all lots served by the Right-of-Way.

SIMPSON
 PN 30606 06 14 8710
 PG 30606 06 14 8710

50605 5th Floor
 of 1163 Acres

518050'W 218.08'

518050'W 218.08'

518050'W 218.08'

518050'W 218.08'

518050'W 218.08'

518050'W 218.08'

518050'W 218.08'

518050'W 218.08'

518050'W 218.08'

518050'W 218.08'

518050'W 218.08'

518050'W 218.08'

518050'W 218.08'

518050'W 218.08'

518050'W 218.08'

518050'W 218.08'

518050'W 218.08'

518050'W 218.08'

518050'W 218.08'